

Directions

Post Code: LA23 IPA

Directions By Car From the South

Exit M6 Jct 36 Follow A591 to Windermere .
When you reach Windermere stay on the
A591 towards Ambleside for 0.5 mile .
At the mini roundabout turn right taking the
A592 Patterdale Road, signposted Ullswater.
Limefitt is 2.5 miles on the right.

Directions By Car From the North and North East

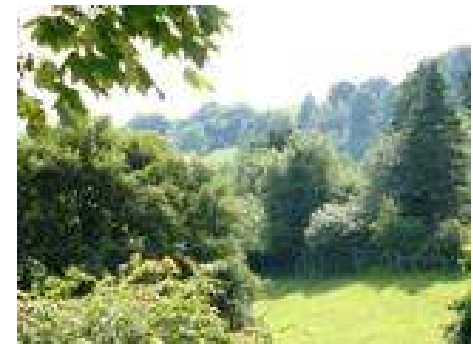
Exit to the left onto M6 J40
At the roundabout, take the fourth exit onto
A592 for 1.1 miles.
At the roundabout, take the second exit onto
A592 for 21 miles.
Pass the Queens Head Inn in Troutbeck and
continue down the hill for approximately half a
mile.
Limefitt is on the left shortly before you reach
Troutbeck Church



Troutbeck View



A luxury pine lodge
in the heart of the
English Lake District



WWW.TROUTBECKVIEW.CO.UK

**Troutbeck View
Limefitt Park, Troutbeck,
Windermere, Cumbria, LA23 IPA**

Phone: +44 (0)7502 459600

E-mail: info@troutbeckview.co.uk

Troutbeck View



The moment you see Troutbeck View you will realise why it is perfectly placed for a peaceful and relaxing holiday!

Troutbeck View provides spacious accommodation for up to four people. Central Heating, and double glazing ensure that the lodge is warm and welcoming whatever the weather. It is in a tranquil location but close enough to the major visitor centres for those who want to explore the Lake District.

There is a large private balcony and sun deck, overlooking Wansfell Pike to the West and the Troutbeck Fells to the North. The views are stunning



As guests at Troutbeck View you can take advantage of complimentary membership of the leisure club at White Cross Bay* during your stay.

* Guests wishing to take advantage of this facility will be required to register for this facility at the park office on arrival and to complete a brief medical questionnaire.

Accommodation :

Open plan lounge and dining room. Feature fireplace. Comfortable leather sofas, coffee tables, large dining table and chairs.



40" LCD TV, DVD player, Sony PS2, iPod Docking Station and Board Games.



Fully equipped kitchen. Gas oven and hob, fridge / freezer microwave oven, toaster, kettle, .

1 double bedroom with double bed and fitted wardrobes & cupboards. Spacious en suite shower room with basin & WC.



1 twin bedroom. 2 single beds with fitted wardrobe & cupboards. An ideal room for kids. Bath room, with full sized bath, overhead shower, WC and hand basin.

Large private balcony / sun deck, Garden furniture. & barbecue, Fantastic views to all sides.. Large plot with parking space for two cars behind the lodge.



Duvets, pillows, bath towels and bed linen are all provided, making your holiday as easy and as comfortable as possible.

Cots and highchairs are available by prior arrangement at no extra cost.

Suitability:

- Children welcome - Limefitt Park is a site that is particularly well suited to family holidays.
- Please note that Troutbeck flows through the park lodge and that parents must take care to ensure that children are properly supervised at all times, but especially when they are near the water. The lodge does have a gated decking area for your added security.
- Although the lodge itself is all on one level, there are steps up to it, making it inaccessible for wheelchairs

Rental Notes :

- For the comfort of all of our guests we do not allow smoking in the property although you may smoke outside on the balcony if you wish.
- We do not accept bookings from young all male, or all female parties without prior discussion.
- Changeover day is normally Friday or Monday

